

Wilbury Crescent

Hove

LEXTONS /
SALES
LETTINGS
AUCTIONS
COMMERCIAL



About the property

FOR SALE BY AUCTION 10th December 2025

Located in a prime Hove setting, this 740 sq ft two-bedroom, ground floor apartment offers strong potential for investors or developers. Positioned within a well-maintained apartment block, the property comprises a large reception area, a separate kitchen, and one bathroom.

The apartment benefits from excellent transport links, including a short walk to Hove train station, and easy access to the varied amenities of Church Road. Sussex County Cricket Ground sits close by, adding to the appeal of the location for both residents and prospective tenants.

For sale by auction on 10th December, this property presents an opportunity to secure a sought-after address with significant potential for value enhancement.

Wilbury Crescent Hove

£150,000



2

BEDROOM

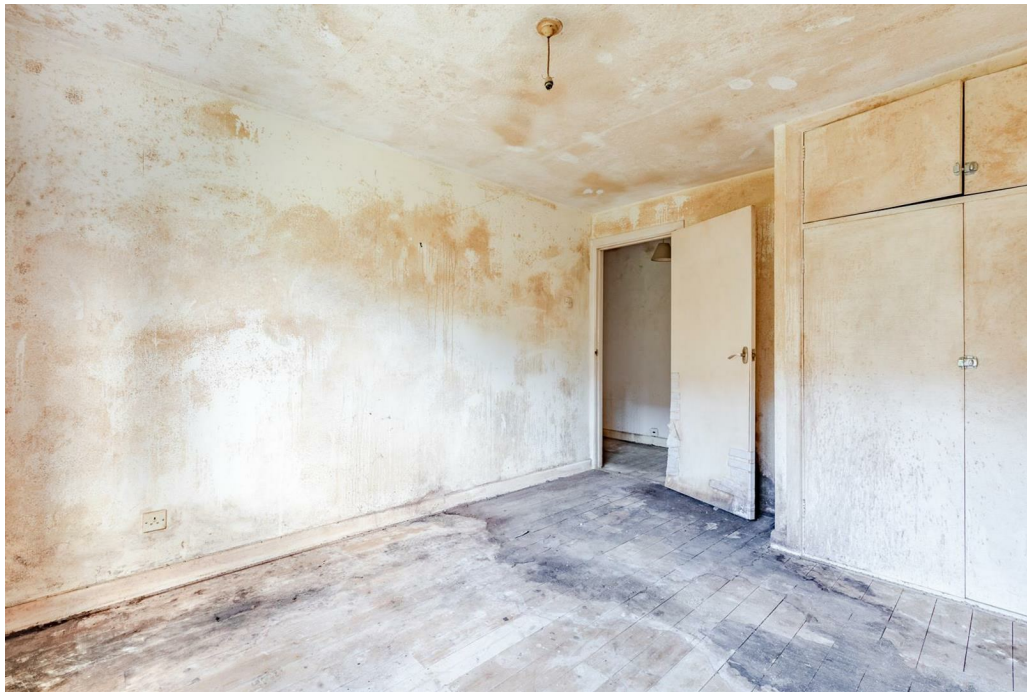
1

RECEPTION

1

BATHROOM

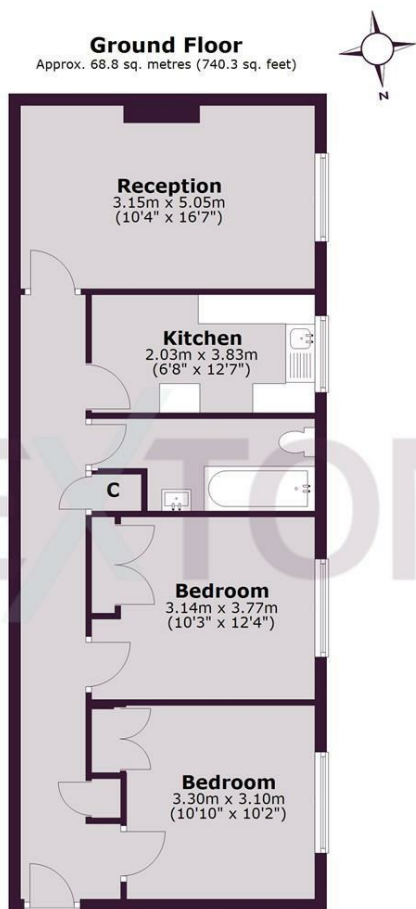








SCAN HERE TO VIEW ALL AUCTION PROPERTIES



Total area: approx. 68.8 sq. metres (740.3 sq. feet)
Whilst every care has been taken to ensure accuracy, dimensions are approximate and for illustrative purposes only.
Created for exclusive use for Lextons. All rights reserved.
Plan produced using PlanUp.

Whilst every care has been taken to ensure accuracy, dimensions are approximate and for illustrative purposes only.

Created by Lextons. All rights reserved.

